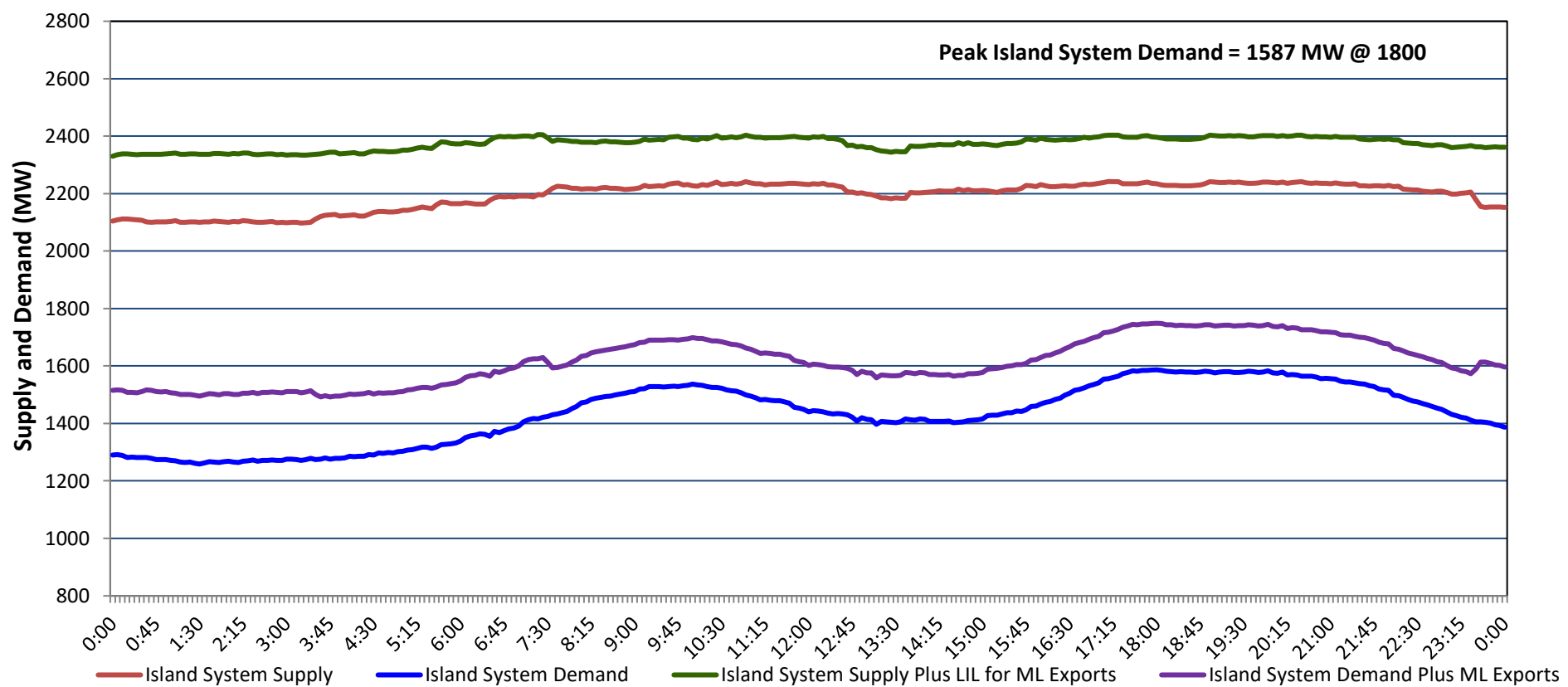


# Newfoundland Labrador Hydro (NLH) Supply and Demand Status Report Filed Monday, February 03, 2025

## Section 1 Island Interconnected System - Supply, Demand & Exports Actual 24 Hour System Performance For Sunday, February 02, 2025



### Island Supply Notes For February 02, 2025 <sup>1</sup>

A As of 0000 hours, October 20, 2024, Holyrood Unit 1 unavailable due to forced extension to planned outage (170 MW).

## Section 2 Island Interconnected System - Supply, Demand & Outlook

Mon, Feb 03, 2025	Island System Outlook <sup>2</sup>	Seven-Day Forecast	Island System Daily Peak Demand (MW)	
			Forecast <sup>8</sup>	Adjusted <sup>6</sup>
Island System Supply: <sup>4</sup>	2,240 MW	Monday, February 3, 2025	1,630	1,521
NLH Island Generation: <sup>3,7</sup>	1,525 MW	Tuesday, February 4, 2025	1,380	1,274
NLH Island Power Purchases: <sup>5</sup>	105 MW	Wednesday, February 5, 2025	1,565	1,457
NP and CBPP Owned Generation:	205 MW	Thursday, February 6, 2025	1,660	1,551
LIL/ML Net Imports to Island: <sup>9</sup>	405 MW	Friday, February 7, 2025	1,370	1,264
		Saturday, February 8, 2025	1,415	1,309
7-Day Island Peak Demand Forecast:	1,660 MW	Sunday, February 9, 2025	1,425	1,319

### Island Supply Notes For February 03, 2025

- Notes:
1. Generation outages for running and corrective maintenance are included. These are not unusual for power system operations. They generally do not impact customer supply. Hydro schedules outages to system equipment whenever possible to coincide with periods when customer demands are low and sufficient supply reserves are available. However, from time to time equipment outages are necessary and reserves may be impacted.
  2. As of 0800 Hours.
  3. Gross continuous unit output.
  4. Gross output from all Island sources (including Note 3).
  5. NLH Island Power Purchases include: ML Imports, Exploits Generation, Rattle Brook, Star Lake, Wind Generation and capacity assistance (when applicable).
  6. Adjusted for interruptible load and the impact of voltage reduction when applicable.
  7. Due to limitations inherent in the design of combustion turbines, the output of combustion turbines may be reduced in the event that ambient temperatures exceed the threshold required for full rated output. This threshold is dependent on the design of each turbine.
  8. Does not include ML Exports.
  9. LIL Import sunk in the Island System. Actual LIL flows will be restricted by various system conditions including, but not limited to, Island Load, ML Exports and Avalon Unit status.

## Section 3 Island Peak Demand and Exports Information Previous Day Actual Peak and Current Day Forecast Peak

Sun, Feb 02, 2025	Island Peak Demand <sup>10</sup>	18:00	1,587 MW
	Exports at Peak		162 MW
	LIL Net Imports to Island		8,256 MWh
Mon, Feb 03, 2025	Forecast Island Peak Demand		1,630 MW

Notes: 10. Island Demand is supplied by NLH generation and purchases, LIL Imports plus generation owned and operated by Newfoundland Power and Corner Brook Pulp & Paper (Deer Lake Power, DLP).